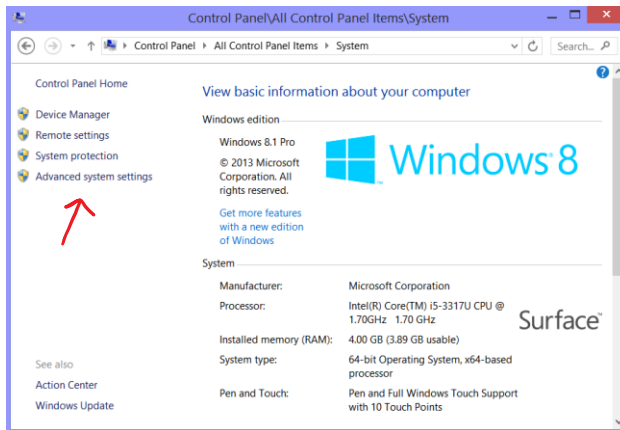


PYTHONPATH and you

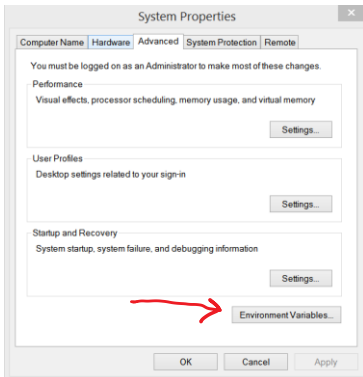
When you import modules into python, python looks into a system variable called the PYTHONPATH to figure out where to search for those modules. Normally this includes folders such as C:\Python27\Lib and C:\Python27\Lib\site-packages

You can add your own folders to this search path by simply adding your path of interest to the variable. Here is how to do that on windows:

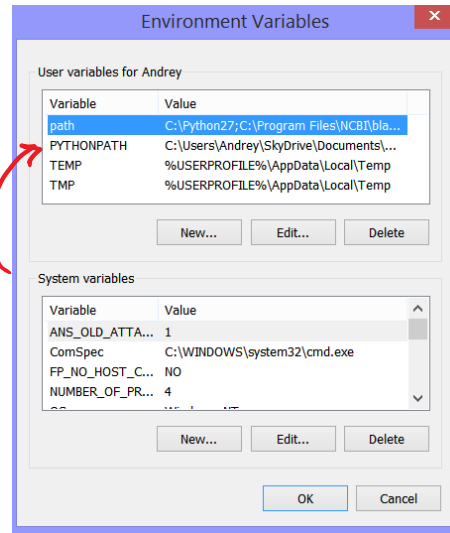
- 1.) Open the control panel. On windows 8 you can press Win+C to open the charms bar, press settings, and then control panel. On windows 7 you can open the start menu, then select control panel.
- 2.) Click System
- 3.) Click Advanced System Settings



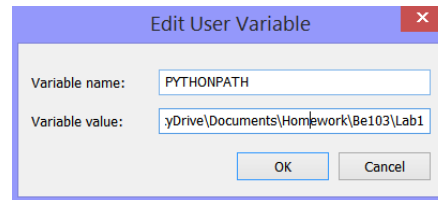
- 4.) Click Environment Variables..



- 5.) Look for PYTHONPATH in User Variables



- 6.) If it's there, select it and hit Edit.. If not, click New..
- 7.) Insert your path into where it says Variable value. Different paths are separated by semicolons. Make sure you don't have any extra spaces or what-not in your path.



- 8.) Restart Canopy just to make sure it is all loaded in properly
- 9.) Import all the things! As long as they are in your path.